

ARTIST PROFILES

Baboloki Somolekae

Mr. Baboloki Somolekae is a young artist born in Malepolole. He recently graduated from University of Botswana, with a Bachelor in Industrial Design. This is his 2nd set of stamps. He is a self-taught artist who appreciated and loved art from a young age. He drew his inspiration from cultural events that take place in the country like Dithubaruba. He has a vision to contribute massively in the art sector by inspiring young artists to their full potential. His first stamp set was 1st Anniversary of Remembrance: Sir Ketumile Quett Joni Masire.

Monkgogi Samson

Born in Palapye, Monkgogi Samson graduated with a B-Tech Degree in Graphic Design from the Cape Peninsula University of Technology, South Africa. He has been working as a Visual and Brand Communications designer for over 10 years, designing for corporations, non-profits, academia, governments and the private sector.

TECHNICAL INFORMATION

Printer: Southern Colour Print, New Zealand

Artist: Baboloki Somolekae

Graphic Designer: Monkgogi Samson

Stamp size: 30mm x 40mm

Period of sale: 2 years

Sheet Format: 2x20 panes with Gutter

Printing: Four Colour Process

Date of Issue: 20 February 2018

Denominations: P0.50, P1.00, P2.00, P5.00, P7.00, P10.00

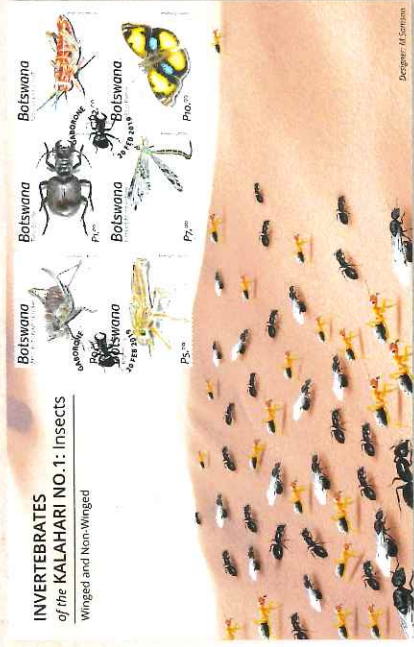
ACKNOWLEDGEMENTS

BotswanaPost would like to thank the Ministry of Environment, Wildlife and Tourism, Entomology Department for assistance with the write-ups for the "Invertebrates of the Kalahari No1: Insects" brochure.

References

1. Griffiths C, Picker M, Weaving A, 2004, Field Guide to Insects, Struik publishers, Cape Town, South Africa. ISBN 978 1 77007 061 5
2. Mares, J 2002. Manicora: a monograph of the genus, Manticora Taita Publishers. ISBN 978-8090273443.
3. Hook-tailed Antlion and Saw-backed locust - cc-license Reference Images, contributed to Bernard Du Pont:
<https://www.flickr.com/photos/65695019@no7/6881209659>
<https://commons.wikimedia.org/w/index.php?curid=40736012>

FIRST DAY COVER



Invertebrates of the Kalahari No1: Insects

Winged and Non-Winged

Botswana
Armoured Ground Cricket



Botswana
Tiger Beetle



Botswana
Saw-backed Locust



Botswana
Robber Fly



Botswana
Hooked-tailed Antlion



Botswana
Yellow Pansie



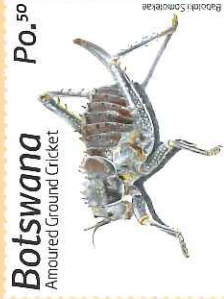
BotswanaPost
We deliver. Whatever. Whenever.

BOTSWANAPOST STAMP ISSUING POLICY

Botswana maintains a conservative issuing policy. A Definitive Set is released every 5 years, illustrating a theme of international interest. Commemorative sets are issued 4 or 5 times per year, illustrating themes that reveal the environment, cultural and historical heritage of Botswana.

Invertebrates of the Kalahari No1: Insects

Winged and Non-Winged



Botswana
Armoured Ground Cricket
(Acanthoproctus cervinus)

Belongs to the family Bradyporidae. The cricket has a large, grey abdomen with dark brown top, pronotum with black spines and large yellow patch on the back. Females are wingless. As in all members of the family, reduced wings of males have a row of file-like teeth that produce the characteristic continuous high pitch call when rubbed together. The species is found in semi-arid low scrubby vegetation and open thorn veld.



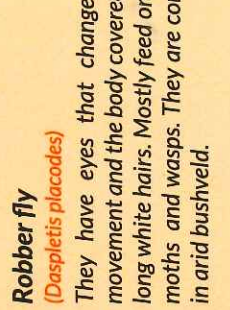
Botswana
Tiger Beetle
(Mantidcora scrabba)

Tiger beetle
It's a well-known genus of tiger beetle that is endemic to Africa. Its members are the largest of the subfamily. Species are darkly colored, nocturnal, and flightless. Males usually have exaggerated mandibles compared to the females, that are used for clasp during copulation.



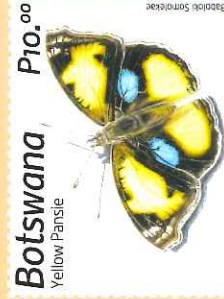
Botswana
Hook-tailed Antlion
(Palparidius)

Medium sized antlion with a yellow and chalky grey body. Its wings are clear, with sparse irregular black blotches, yellowish wing tips and conspicuous white wing spots. Males are easily identified by very long paired copulatory structures at the end of the abdomen. Larvae live and feed in the deep sand. The species is found in a range of vegetation types in arid areas.



Botswana
Robber Fly
(Daspletis placodes)

They have eyes that change with movement and the body covered with long white hairs. Mostly feed on bees, moths and wasps. They are common in arid bushveld.



Botswana
Yellow Pansie
(Junonia hierta)

The species belongs to the subfamily Nymphalidae, a group of small to large butterflies with coloration too diverse to allow generalized description. The butterfly is medium sized, black with large yellow and orange patches on wings, hind wings, each with violet-blue circular patch. Greyish brown underside provides camouflage when wings are closed. The species often settles on the ground with wings open. Males establish and patrol territories. The species prefers open ground and grassy areas.



Botswana
Saw-backed Locust
(Hoplolopha sp. serrata ?)

Typically with wingless females and winged males. Females are brownish and greenish grey whereas males are steel grey with a cream cheek with pale yellow hind wings. Females produce eggs with a swollen case. These are common in shrubby areas with low vegetation.

ORDER FORM

Name:
Address:
Email:
City:
Country:
Telephone Number:

Quantity	Description	Price	P	T
	First Day Cover	P50.00		
	Set(s) Stamps Mint	P25.50		
	Set(s) Stamps Cancelled:	P25.50		
	Set(s) Cylinder Blocks Mint	P102.00		
	Set(s) Cylinder Blocks Mint	P102.00		
	Set(s) Gutter Pair Mint	P51.00		
	Set(s) Gutter Pair Cancelled	P51.00		
	Set(s) Full Sheets of 40 Mint	P1020.00		
	Set(s) Full Sheets of 40 Cancelled	P1020.00		
	Handling and Postage fee	P15.00		
	TOTAL			

Please charge my: (Tick appropriate box)

VISA MasterCard

Card Number: _____

Expiry Date: M M Y Y CVC: _____

Signature: _____

If you are not satisfied with your purchase, kindly return within 14 days and a full refund will be forwarded to you.

Philatelic Bureau
PO Box 100, Gaborone, Botswana
Tel: (+267) 395 2806
Fax: (+267) 391 3599
Toll-Free: 0800 335577
Email: philatelic@botswanapost.co.bw
Website: www.botswanapost.co.bw

POSO HOUSE, Plot 539552
Khama Crescent, Gaborone



Elsa Lajimi
Philately Manager

